

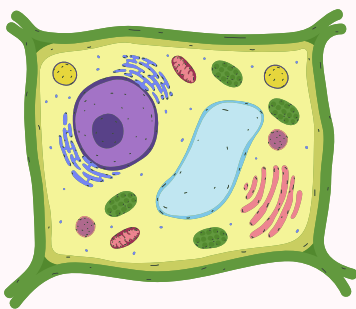
Name: _____

Date: _____

Class: _____

DIFFERENCES BETWEEN PLANT AND ANIMAL CELLS

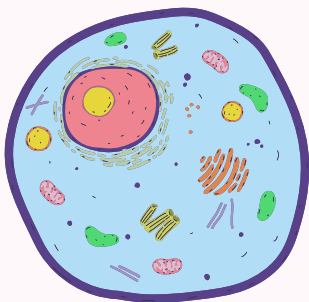
The following statements and figures show a mix of features from both plant and animal cells.
Select the correct features match them into the relevant columns in the chart below.


scienceaplusedu.com


Has one large central vacuole

Has a cell wall made of cellulose

Autotrophic (makes its own food)



No cell wall, only a cell membrane

Has small or no vacuoles

Has chloroplasts.

Name: _____

Date: _____

Class: _____

DIFFERENCES BETWEEN PLANT AND ANIMAL CELLS

scienceaplusedu.com

| Plant cell | Animal cell |
|------------|-------------|
| | |
| | |
| | |
| | |

DIFFERENCES BETWEEN PLANT AND ANIMAL CELLS

scienceaplusedu.com

| Plant cell | Animal cell |
|--|---|
| A diagram of a plant cell, rectangular with a thick green cell wall. It contains a large purple nucleus, a large light blue central vacuole, and several green chloroplasts. | A diagram of an animal cell, roughly circular with a thin blue cell membrane. It contains a large red nucleus, several small yellow vacuoles, and various organelles like mitochondria and Golgi apparatus. |
| Has a cell wall made of cellulose | No cell wall, only a cell membrane |
| Autotrophic (makes its own food) Contains chloroplasts | No chloroplasts |
| Has one large central vacuole | Has small or no vacuoles |