

PARTS OF AN ANIMAL CELL

Label each part of the animal cell.

cytoplasm
centrosomes
microtubules

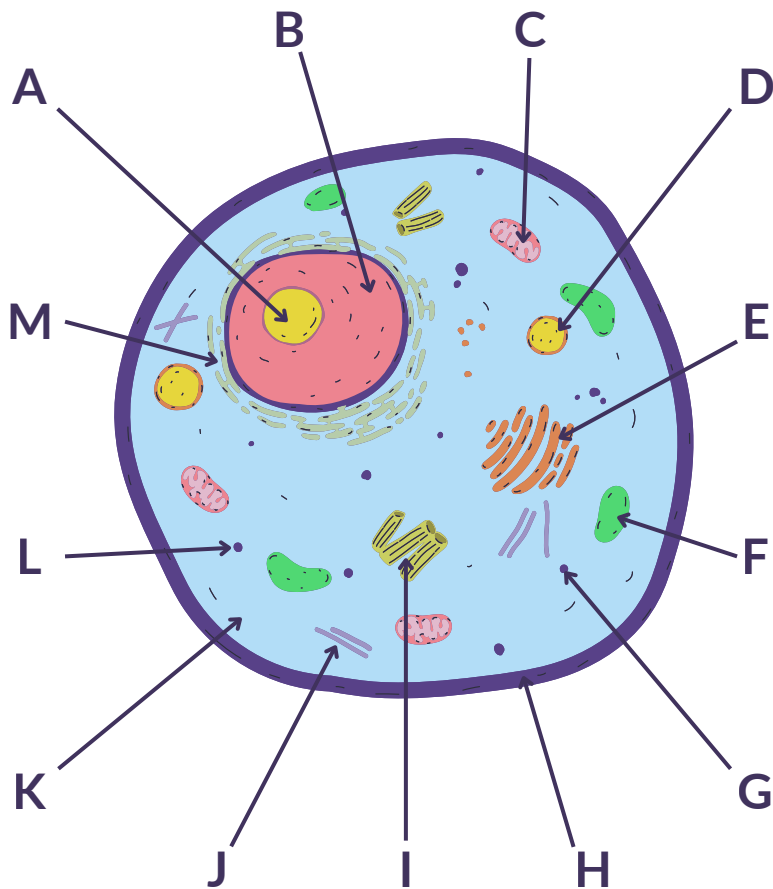
ribosome
vacuole
nucleolus

nucleus
golgi body
lysosome

cell membrane
mitochondria
endoplasmic reticulum



scienceplusedu.com



- A _____
- B _____
- C _____
- D _____
- E _____
- F _____
- G _____
- H _____
- I _____
- J _____
- K _____
- L _____
- M _____